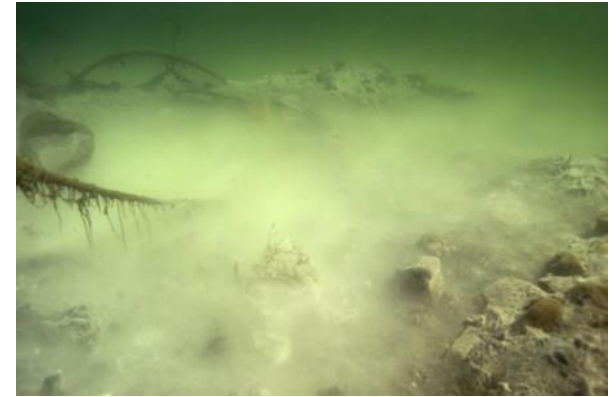


Science to inform policy for the Baltic Sea

Michelle McCrackin, Bo Gustafsson
Stockholm University Baltic Sea Centre

michelle.mccrackin@su.se

Eutrophication in the Baltic Sea

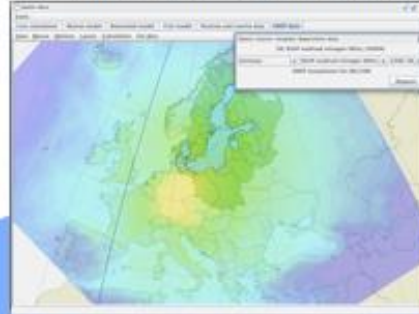


Baltic Nest: Decision Support System to facilitate adaptive management

Marine modeling



Atmospheric emissions and load



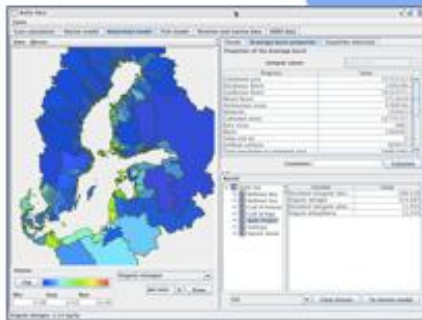
Cost minimization model



The Nest-system is available on line, free of charge and can be run in both an expert and a manager mode.

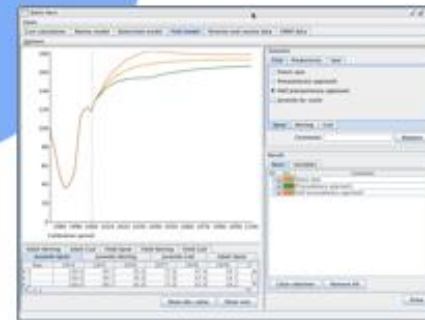
Download at www.balticnest.org

Drainage basin modeling



Marine and runoff data

Food web model



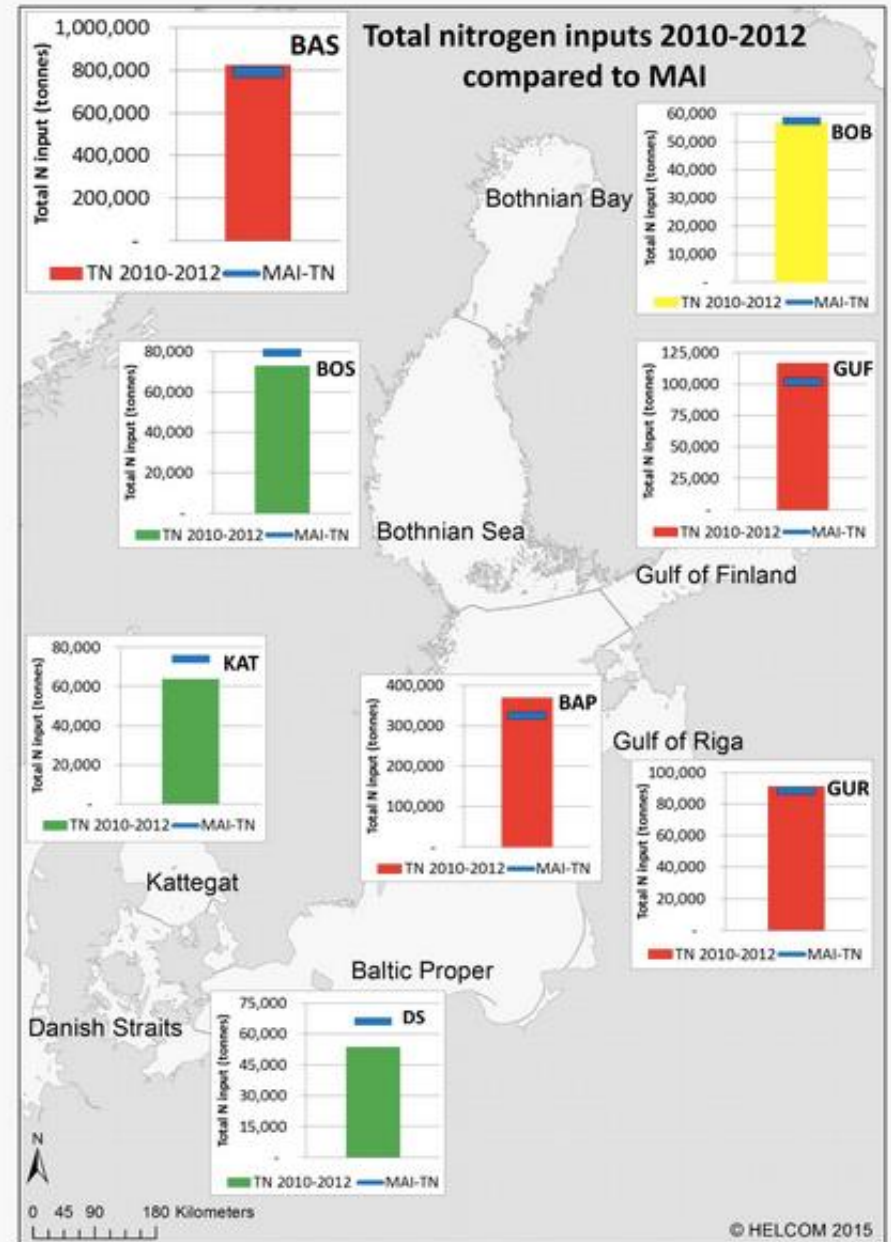
Progress in reducing N inputs

The Baltic Sea Action Plan

A new environmental strategy for the Baltic Sea region

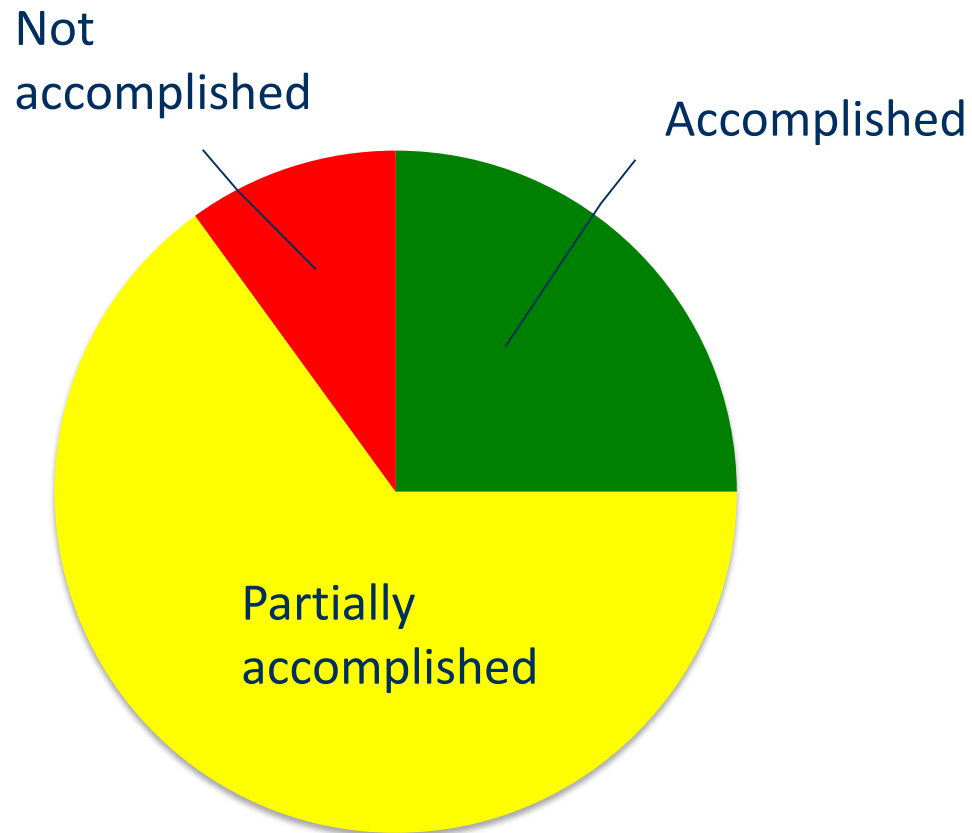


Helsinki Commission
Baltic Marine Environment Protection Commission



Further actions needed

Status of actions in the Baltic Sea Action Plan



Baltic Eye: Science and Communication to Improve Policy-Making for the Baltic Sea

Blue growth and environmental challenges in the Baltic Sea

SUSTAINABLE DEV.

13/11/2014 - 14:59



Tina Elfving **Baltic Sea Centre, Baltic Eye**, the scientific think-tank at Stockholm University **Baltic Sea Centre**. Tina Elfving is Manager and Christoph Humborg is Research Manager of **Baltic Eye**, the scientific think-tank at Stockholm University **Baltic Sea Centre**.

Dear Commissioner

Congratulations on the new assignment. You now have a unique opportunity to change the Baltic Sea environment for the better.

The Baltic Sea is a unique but also very sensitive marine ecosystem. For more than a century it has been under tremendous stress from human activities. We now pay a heavy price for this, in the form of algal blooms, decreasing fish stocks and other symptoms.

In 2009, the European union strategy for the Baltic Sea region (EUSBSR) became the first comprehensive EU strategy to target a specific macro-region, and is now closely knit to the HELCOM Baltic Sea Action Plan (BSAP) and other regional and national initiatives. It's important that the EU Commission maintain its key role in this process.

You will of course not be able to solve all the environmental problems of the Baltic Sea during your term of office. The marine ecosystem recovers slowly.

But it *does* recover – if we let it.



To:

Mr Carmone Vella

Rue de la Loi / Wetstraat 170

B-1049 Bryssel

Belgien

Baltic Eye Policy Brief

April 2015

@thebalticeye

The cosmetics clean-up

- first step to reduce microplastic input into the Baltic Sea